



FC086

**APT 7 LES BARDEAUX LA RUE DE HAUT, ST.
LAWRENCE, JERSEY, JE3 1JZ**

Asking Price

£1,675,000

FINE & COUNTRY
JERSEY

Property details

FLYING FREEHOLD - Welcome to Les Bardeaux, an unrivalled display of luxury living.

Apartment 7 is a 2 bedroom apartment measuring 1,195 sq.ft.

No expense has been spared and no detail unexplored within this exclusive development of eleven apartments.

A undercover garage is available for all apartments to use, which has been thoughtfully designed to provide each owner with at least 2 spaces, equipped with electric charge points, private store rooms, and easy lift access. Complementing the convenience, an external car washing bay and visitor parking facilities are also available.

Every apartment is fully equipped to accommodate smart home features, boasting video entry systems, Control 4, Lutron, and other cutting-edge technologies. The kitchen and utility areas showcase a carefully curated selection of top-end brands, ensuring a perfect blend of style and functionality. German brands like Miele, Schuller, and Neff adorn these spaces, brought together by our talented Design team to create a beautiful and modern contemporary design, perfect for home dining and hosting memorable parties.

Situated in a highly-coveted area, this magnificent development boasts breathtaking and ever-changing sea views of St Aubin's Bay. Its privileged location places it a mere five minutes away from Jersey's Airport and the private jet terminal, offering utmost convenience for travel. Within a short stroll, residents will find access to a private medical facility, ensuring their healthcare needs are well catered for. Additionally, the efficient network of bus routes, schools, various shops, inviting beaches, exquisite restaurants, and luxurious hotels, are all conveniently within walking distance.

Outside

South facing terrace which leads out from the living area.

Undercover parking for two cars

Services

Underfloor heating

Lutron QS system

Directions

Heading west on St Aubin's Inner Road, pass Bel Royal Motors, drive through the bend and continue towards La Vallee de St Pierre. Take the next right into La Rue de Haut (which is at the side of Bel Royal School) and drive past Little Grove Clinic. The development is on the LHS.



Specifications

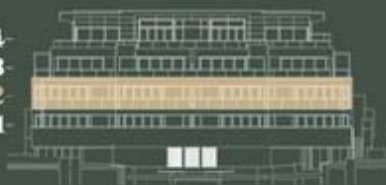
Total Area (M²)

Unit 4	Unit 5	Unit 6	Unit 7
LIVING 50.38	LIVING 55.80	LIVING 55.80	LIVING 50.23
BALCONY 9.31	BALCONY 19.67	BALCONY 19.62	BALCONY 16.9
TERRACE 27.5	MASTER BEDROOM 14.42	MASTER BEDROOM 14.54	TERRACE 15.32
MASTER BEDROOM 13.28	BEDROOM 2 10.55	BEDROOM 2 10.55	MASTER BEDROOM 13.28
BEDROOM 2 9.24	UTILITY 5.5	UTILITY 5.29	BEDROOM 2 9.5
ENTRANCE HALL 9.04	ENTRANCE HALL 4.64	BATHROOM 5.13	ENTRANCE HALL 9.9
UTILITY 5.32	EN-SUITE 4.13	ENTRANCE HALL 4.32	UTILITY 5.32
BATHROOM 5.63	DRESSING 3.82	EN-SUITE 4.13	BATHROOM 5.63
EN-SUITE 4.13	LOBBY 3.71	DRESSING 3.82	EN-SUITE 4.13
DRESSING 3.83	STORE 0.56	LOBBY 3.08	DRESSING 3.46
LOBBY 2.91	BATHROOM 5.61	STORE 0.56	LOBBY 3.01
STORE 0.69	WARDROBE 0.69	WARDROBE 0.69	STORE 0.69
WARDROBE 0.61			WARDROBE 0.69
TOTAL 153.41	TOTAL 128.56	TOTAL 128.42	TOTAL 141.36

South Elevation

Four apartments with south-facing balconies

L. 4
L. 3
L. 2
L. 1



Floor Plan, Level Two, Unit 4, 5, 6 & 7



Call us on

01534 888855

jersey@fineandcountry.com

www.fineandcountry.je

5 King Street, St Helier, Jersey, JE2 4WF

Agents Note: Whilst every care has been taken to prepare these particulars, they are for guidance purposes only. All measurements are approximate and are for general guidance purposes only and whilst every care has been taken to ensure their accuracy, they should not be relied upon and potential buyers are advised to recheck the measurements.